

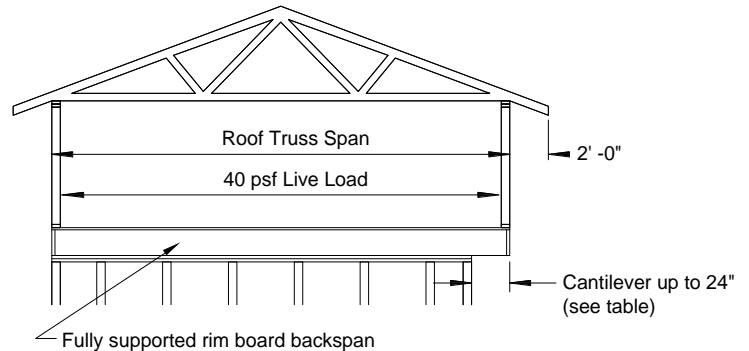
1 1/8" TJ® Rim Board for Header and Cantilever Applications

Product Benefits:

- 1 1/8" TJ® Rim Board is your economical rim board choice for traditional conventional construction applications such as those covered in our *Conventional Construction Technical Resource Sheet (Reorder #1502)*. For residential projects that fall outside of conventional construction provisions in the building codes, we offer 1 1/4" Trus Joist® TimberStrand® LSL rim board for engineered solutions.
- 1 1/8" TJ® Rim Board can be used in limited bending applications to span over window and door openings and to trim out stair case openings. It can also be used in cantilever applications up to 2'-0".
- Our 1 1/8" TJ® Rim Board is also recommended for use with the Silent Floor® System.

TJ® RIM BOARD ALLOWABLE CANTILEVER LENGTH

Rim Board Depth	Roof Truss Span	Roof Total Load		
		35 psf	45 psf	55 psf
9 1/2" 11 7/8" 14" 16"	< 26'	2'-0"	2'-0"	2'-0"
	28'	2'-0"	2'-0"	1'-6"
	30'	2'-0"	2'-0"	X
	32'	2'-0"	2'-0"	X
	34'	2'-0"	1'-6"	X
	36'	2'-0"	X	X
	38'	2'-0"	X	X
	40'	2'-0"	X	X



How to Use This Table:

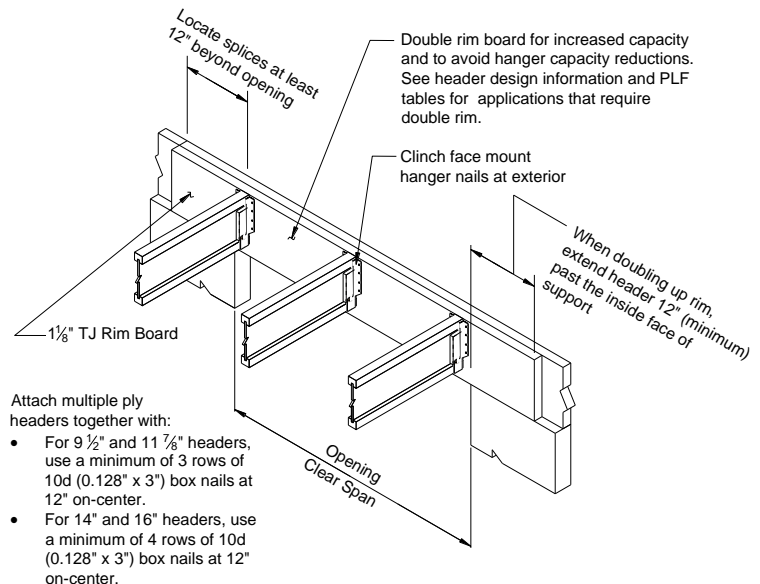
1. Locate the **Roof Truss Span** (horizontal) that meets or exceeds your condition.
2. Locate the **Roof Total Load** for your application.
3. Scan down the table to determine the maximum allowable cantilever length for your application.
4. "X" indicates that cantilevers will not work for that condition.

General Notes:

- Table is based on:
 - Duration of load: 125% with 35 psf; 115% with 45 psf and 55 psf.
 - 15 psf roof dead load on horizontal projection.
 - 80 plf exterior wall load.
 - Roof truss with 24" soffits.
 - Single story applications.

Additional Header Design Information

- Lateral support is required along the span at 24" o.c. or less for both parallel and perpendicular framing conditions. The figure to the right shows perpendicular framing.
- Ensure header depth matches TJ® joist and rim board depth.
- Headers that are 14" and deeper require at least two plies.
- Only use face mount hangers. Decrease allowable hanger capacities by 25% when using only a single ply.
- For conditions where rim board headers are required to support concentrated loads from beams, columns, etc., use an appropriately sized Microllam® LVL, Parallam® PSL, or TimberStrand® LSL header instead.
- For larger openings, use 1 1/4" TimberStrand LSL® rim board.



1½" TJ® RIM BOARD LOAD TABLES (PLF)

Condition (Total Load L/240)	Clear Span	1-ply (1½" width)		2-ply (2¼" width)			
		9½"	11⅞"	9½"	11⅞"	14"	16"
Floor 100%	2'-0"	1,689	2,640	3,378	5,280	5,559	5,559
	2'-6"	1,080	1,688	2,160	3,377	4,445	4,445
	3'-0"	749	1,171	1,498	2,343	3,258	3,703
	3'-6"	549	859	1,099	1,719	2,391	3,125
	4'-0"	420	657	840	1,314	1,829	2,390
	4'-6"	Not Applicable		662	1,037	1,443	1,886
	5'-0"			535	838	1,167	1,526
	5'-6"			441	692	963	1,259
6'-0"	370			580	808	1,057	
Roof 115% Snow Load Area	2'-0"	1,943	2,779	3,886	5,559	5,559	5,559
	2'-6"	1,242	1,942	2,485	3,884	4,445	4,445
	3'-0"	862	1,347	1,724	2,695	3,703	3,703
	3'-6"	632	989	1,265	1,978	2,751	3,172
	4'-0"	483	756	967	1,513	2,104	2,750
	4'-6"	Not Applicable		763	1,194	1,661	2,171
	5'-0"			617	965	1,344	1,756
	5'-6"			509	797	1,109	1,450
6'-0"	426			668	930	1,217	
Roof 125% Non-Snow Load Area	2'-0"	2,112	2,779	4,224	5,559	5,559	5,559
	2'-6"	1,350	2,111	2,701	4,223	4,445	4,445
	3'-0"	937	1,465	1,874	2,930	3,703	3,703
	3'-6"	687	1,075	1,375	2,151	2,991	3,172
	4'-0"	526	822	1,052	1,645	2,288	2,774
	4'-6"	Not Applicable		830	1,298	1,806	2,360
	5'-0"			671	1,050	1,461	1,910
	5'-6"			553	866	1,206	1,577
6'-0"	464			727	1,012	1,323	

How to Use These Tables

1. Calculate total load (neglect beam weight) on the header in pounds per linear foot (plf).
2. Select the appropriate Clear Span (see figure on Page 1).
3. Scan horizontally to find a capacity that exceeds the actual total load; then scan up for proper rim board width and depth.

General Notes

- Table based on:
 - Uniform loads (beam weight considered) and the more restrictive of simple or continuous span.
 - Deflection criteria of L/240 total load and L/360 live load for all PLF tables.
 - Minimum 12" intermediate and end bearing required. See detail on page 1.

1½" TJ® RIM BOARD TECHNICAL DESIGN INFORMATION

Rim Board:	
Allowable vertical load.....	4,000 plf
Allowable lateral load.....	180 plf
½" lag screw allowable load.....	400 lbs
Bending Applications:	
Maximum allowable span ⁽¹⁾	See tables above
Maximum allowable cantilever.....	See table on Page 1

(1) For applications requiring longer spans, use 1¼" TimberStrand® LSL Rim Board

For additional information on how to install and design 1½" TJ® Rim Board, please refer to:

- **Weyerhaeuser Rim Board Specifier's Guide for Lateral Wind Loads (#TJ-8000) for further rim board design information;**
- **Trus Joist® TJI® 110, 210, 230, 360 and 560 Joists Specifier's Guide (#TJ-4000) for rim board applications and details**